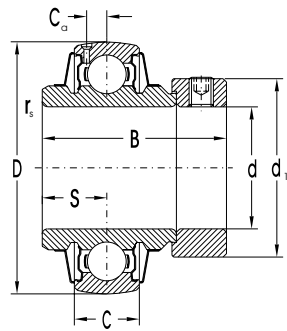
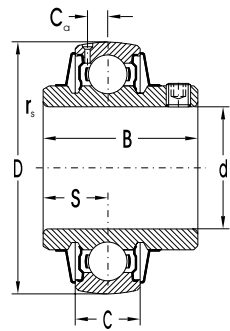


Insert Ball Bearings

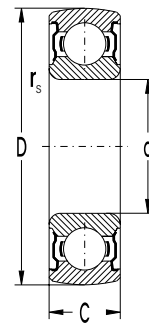
d = 20 to 40 mm



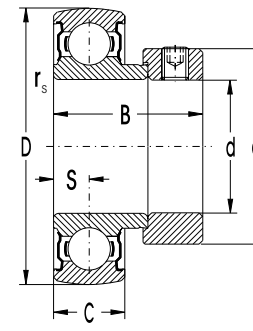
UA



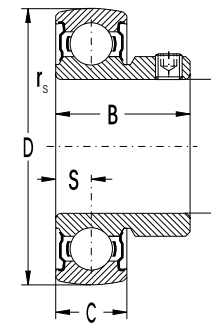
UC



UD



UE



US

Dimensions								Basic Load Rating Dynamic C_r	Static C_{0r}	Bearing Designation	Weight kg	Limiting Speed for Lubrication with Grease Shaft Diameter Tolerance				
d	D	B	C	r_s min	d_1 max	S	C_a					h6	h7	h8	h9	h11
mm								kN			kg	min ⁻¹				
20	47	31.4	14	1.0		12.7	4.1	12.77	6.56	UC204	0.146	8500	5300	3800	1300	850
	52	44.4	15	1.0	38.0	17.5	4.1	14.0	7.90	UA205	0.230	7100	4500	3200	1000	710
25	52	34.1	15	1.0		14.3	4.1	14.0	7.90	UC205	0.170	7100	4500	3200	1000	710
	52		15	1.0		7.5		14.0	7.90	UD205	0.126					
	52	31.0	15	0.6	38.0	7.5		14.0	7.90	UE205	0.180	7100	4500	3200	1000	710
	52	27.7	15	1.0		7.5		14.0	7.90	US205	0.150	7100	4500	3200	1000	710
30	62	48.4	16	1.0	45.0	18.3	4.8	19.4	11.20	UA206	0.360	6300	4000	2800	890	630
	62	38.1	16	1.0		15.9	4.8	19.4	11.20	UC206	0.280	6300	4000	2800	890	630
	62		16	1.0		8.0		19.4	11.20	UD206	0.195					
	62	35.7	16	0.6	45.0	8.0		19.4	11.20	UE206	0.280	6300	4000	2800	890	630
	62	30.3	16	1.0		8.0		19.4	11.20	US206	0.210	6300	4000	2800	890	630
35	72	51.1	17	1.1	56.5	18.8	5.3	25.6	15.20	UA207	0.550	5300	3300	2200	750	530
	72	42.9	17	1.1		17.5	5.3	25.6	15.20	UC207	0.410	5300	3300	2200	750	530
	72		17	1.1		8.5		25.6	15.20	UD207	0.278					
	72	38.9	17	0.6	56.5	9.5		25.6	15.20	UE207	0.420	5300	3300	2200	750	530
	72	34.0	17	1.1		8.5		25.6	15.20	US207	0.330	5300	3300	2200	750	530
40	80	56.3	18	1.1	60.0	21.4	5.9	32.6	19.80	UA208	0.700	4700	3000	1900	670	470
	80	49.2	18	1.1		19.0	5.9	32.6	19.80	UC208	0.550	4700	3000	1900	670	470
	80		18	1.1		9.0		32.6	19.80	UD208	0.360					
	80	43.7	18	0.6	60.0	11.0		32.6	19.80	UE208	0.570	4700	3000	1900	670	470
	80	39.5	18	1.1		9.0		32.6	19.80	US208	0.450	4700	3000	1900	670	470