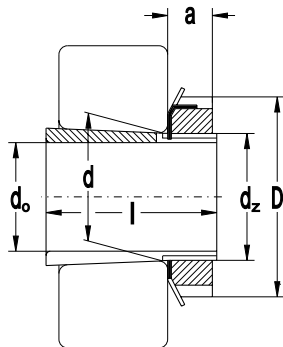


## Adapter Sleeves

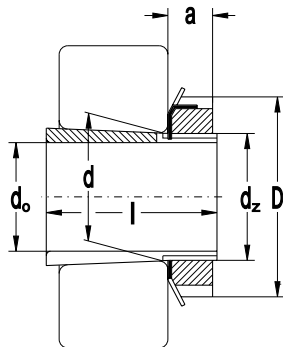
$d_0 = 20$  to  $75$  mm



Dimensions						Sleeve Designation incl. Nut and Locking	Appropriate Components		Weight ~ kg
$d_0$	$d$	$d_z$	D	L	$a$ ~		Nut	Locking	
mm									kg
20	25	M25x1.5	38	26	8	<b>H205</b>	KM5	MB5	0.070
	25	M25x1.5	38	29	8	<b>H305</b>	KM5	MB5	0.075
	25	M25x1.5	38	35	8	<b>H2305</b>	KM5	MB5	0.087
25	30	M30x1.5	45	27	8	<b>H206</b>	KM6	MB6	0.099
	30	M30x1.5	45	31	8	<b>H306</b>	KM6	MB6	0.109
	30	M30x1.5	45	38	8	<b>H2306</b>	KM6	MB6	0.126
30	35	M35x1.5	52	29	9	<b>H207</b>	KM7	MB7	0.125
	35	M35x1.5	52	35	9	<b>H307</b>	KM7	MB7	0.142
	35	M35x1.5	52	43	9	<b>H2307</b>	KM7	MB7	0.165
35	40	M40x1.5	58	31	10	<b>H208</b>	KM8	MB8	0.174
	40	M40x1.5	58	36	10	<b>H308</b>	KM8	MB8	0.189
	40	M40x1.5	58	46	10	<b>H2308</b>	KM8	MB8	0.224
40	45	M45x1.5	65	33	11	<b>H209</b>	KM9	MB9	0.227
	45	M45x1.5	65	39	11	<b>H309</b>	KM9	MB9	0.248
	45	M45x1.5	65	50	11	<b>H2309</b>	KM9	MB9	0.280
45	50	M50x1.5	70	35	12	<b>H210</b>	KM10	MB10	0.274
	50	M50x1.5	70	42	12	<b>H310</b>	KM10	MB10	0.303
	50	M50x1.5	70	55	12	<b>H2310</b>	KM10	MB10	0.362
50	55	M55x2	75	37	12	<b>H211</b>	KM11	MB11	0.308
	55	M55x2	75	45	12	<b>H311</b>	KM11	MB11	0.345
	55	M55x2	75	59	12	<b>H2311</b>	KM11	MB11	0.420
55	60	M60x2	80	38	13	<b>H212</b>	KM12	MB12	0.346
	60	M60x2	80	47	13	<b>H312</b>	KM12	MB12	0.394
	60	M60x2	80	62	13	<b>H2312</b>	KM12	MB12	0.481
60	65	M65x2	85	40	14	<b>H213</b>	KM13	MB13	0.401
	65	M65x2	85	50	14	<b>H313</b>	KM13	MB13	0.458
	65	M65x2	85	65	14	<b>H2313</b>	KM13	MB13	0.557
65	75	M75x2	98	43	15	<b>H215</b>	KM15	MB15	0.707
	75	M75x2	98	55	15	<b>H315</b>	KM15	MB15	0.831
	75	M75x2	98	73	15	<b>H2315</b>	KM15	MB15	1.050
70	80	M80x2	105	46	17	<b>H216</b>	KM16	MB16	0.882
	80	M80x2	105	59	17	<b>H316</b>	KM16	MB16	1.030
	80	M80x2	105	78	17	<b>H2316</b>	KM16	MB16	1.280
75	85	M85x2	110	50	18	<b>H217</b>	KM17	MB17	1.020
	85	M85x2	110	63	18	<b>H317</b>	KM17	MB17	1.180
	85	M85x2	110	82	18	<b>H2317</b>	KM17	MB17	1.450

## Adapter Sleeves

$d_0 = 80$  to  $180$  mm



Dimensions						Sleeve Designation incl. Nut and Locking	Appropriate Components		Weight ~ kg
$d_0$	$d$	$d_z$	$D$	$L$	$a$ ~		Nut	Locking	
mm									kg
80	90	M90x2	120	62	18	<b>H218</b>	KM18	MB18	1.190
	90	M90x2	120	65	18	<b>H318</b>	KM18	MB18	1.370
	90	M90x2	120	86	18	<b>H2318</b>	KM18	MB18	1.690
85	95	M95x2	125	55	19	<b>H219</b>	KM19	MB19	1.370
	95	M95x2	125	68	19	<b>H319</b>	KM19	MB19	1.560
	95	M95x2	125	90	19	<b>H2319</b>	KM19	MB19	1.920
90	100	M100x2	130	58	20	<b>H220</b>	KM20	MB20	1.490
	100	M100x2	130	71	20	<b>H320</b>	KM20	MB20	1.690
	100	M100x2	130	97	20	<b>H2320</b>	KM20	MB20	2.150
100	110	M110x2	145	81	21	<b>H3122</b>	KM22	MB22	2.250
	110	M110x2	145	63	21	<b>H222</b>	KM22	MB22	1.930
	110	M110x2	145	77	21	<b>H322</b>	KM22	MB22	2.180
	110	M110x2	145	105	21	<b>H2322</b>	KM22	MB22	2.740
110	120	M120x2	145	72	22	<b>H3024</b>	KML24	MBL24	1.930
	120	M120x2	155	88	22	<b>H3124</b>	KM24	MB24	2.640
	120	M120x2	155	112	22	<b>H2324</b>	KM24	MB24	3.190
115	130	M130x2	155	80	23	<b>H3026</b>	KML26	MBL26	2.850
	130	M130x2	165	92	23	<b>H3126</b>	KM26	MB26	3.660
	130	M130x2	165	121	23	<b>H2326</b>	KM26	MB26	4.600
125	140	M140x2	165	82	24	<b>H3028</b>	KML28	MBL28	3.160
	140	M140x2	180	97	24	<b>H3128</b>	KM28	MB28	4.340
	140	M140x2	180	131	24	<b>H2328</b>	KM28	MB28	5.550
135	150	M150x2	180	87	26	<b>H3030</b>	KML30	MBL30	3.890
	150	M150x2	195	111	26	<b>H3130</b>	KM30	MB30	5.520
	150	M150x2	195	139	26	<b>H2330</b>	KM30	MB30	6.630
140	160	M160x3	190	93	28	<b>H3032</b>	KML32	MBL32	5.210
	160	M160x3	210	119	28	<b>H3132</b>	KM32	MB32	7.670
	160	M160x3	210	147	28	<b>H2332</b>	KM32	MB32	9.140
150	170	M170x3	200	101	29	<b>H3034</b>	KML34	MBL34	5.990
	170	M170x3	220	122	29	<b>H3134</b>	KM34	MB34	8.360
	170	M170x3	220	154	29	<b>H2334</b>	KM34	MB34	10.200
160	180	M180x3	210	109	30	<b>H3036</b>	KML36	MBL36	6.830
	180	M180x3	230	131	30	<b>H3136</b>	KM36	MB36	9.500
	180	M180x3	230	161	30	<b>H2336</b>	KM36	MB36	11.300
170	190	M190x3	220	112	31	<b>H3038</b>	KML38	MBL38	7.450
	190	M190x3	240	141	31	<b>H3138</b>	KM38	MB38	10.800
	190	M190x3	240	169	31	<b>H2338</b>	KM38	MB38	12.600
180	200	M200x3	240	120	32	<b>H3040</b>	KML40	MBL40	9.190
	200	M200x3	250	150	32	<b>H3140</b>	KM40	MB40	12.100
	200	M200x3	250	176	32	<b>H2340</b>	KM40	MB40	13.900