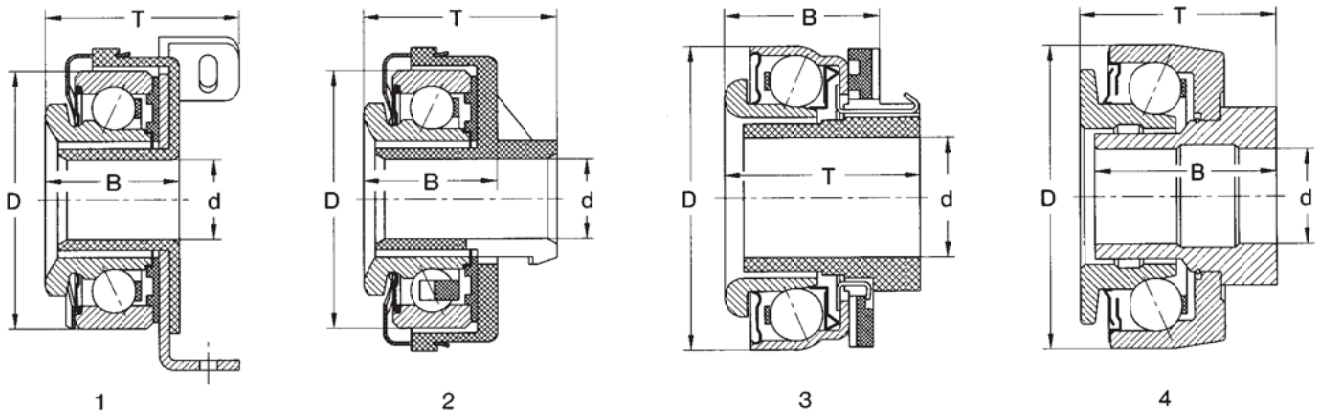
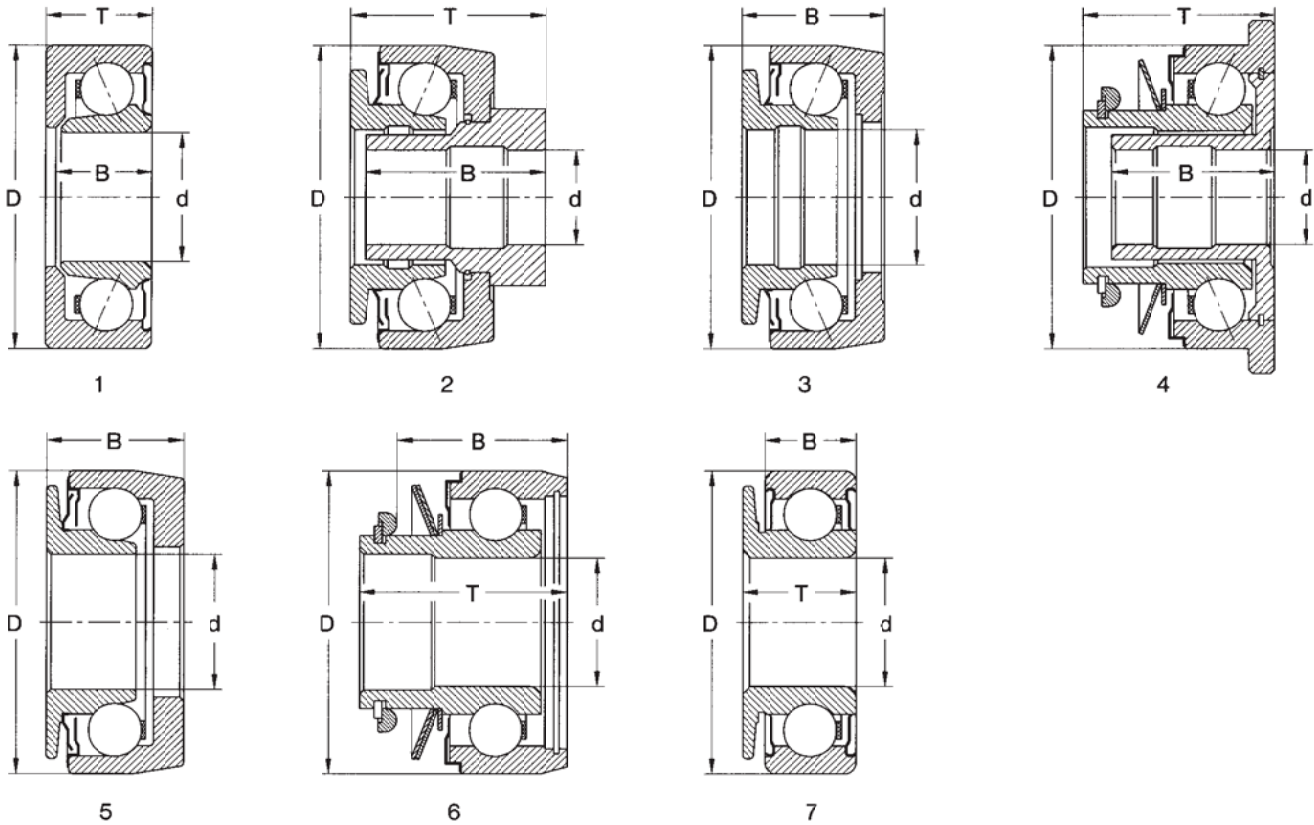


Single Row Angular Contact Ball Bearings



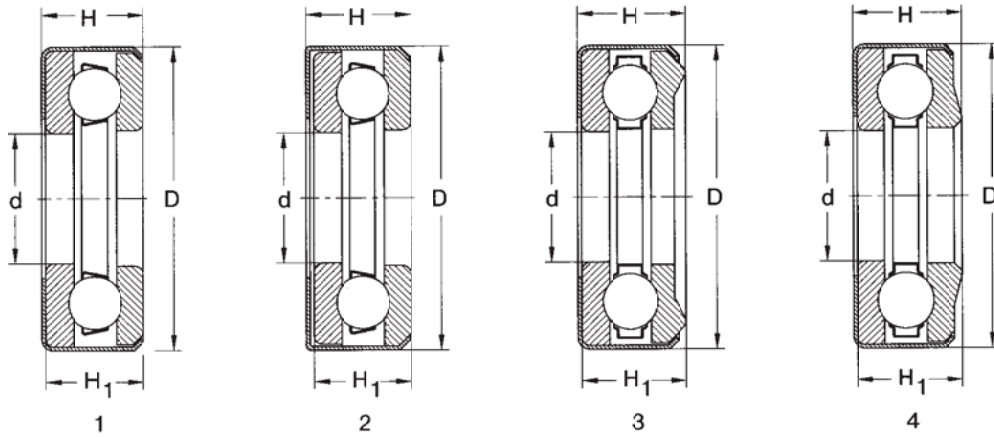
Dimensions				Basic Load Rating		Limiting Speed for Lubrication with Grease Oil	Bearing Designation	Weight	Fig.
d	D	B	T	Dynamic C_r	Static C_{or}				
mm				kN		min^{-1}		kg	
25	54,4	22,5	36	12,30	7,79	7 500	PLC 04-23	0,182	1
	54,4	24	32	12,30	7,79		PLC 04-24		
31,05	58	24,25	32,75	14,80	9,70	7 100	PLC 04-40	0,152	3
45,2	94,5	45	50,5	20,30	16,30	5 300	PLC 06-204	0,780	4

Single Row Angular Contact Ball Bearings



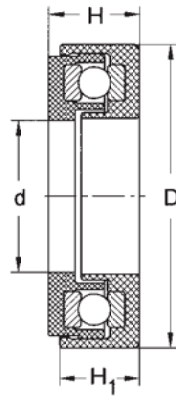
Dimensions				Basic Load Rating		Limiting Speed for Lubrication with Grease Oil	Bearing Designation	Weight	Fig.
d	D	B	T	C _r	C _{or}				
mm				kN		min ⁻¹		kg	
50	80	16	20	22	14	5 300	PLC 05-36	0,330	1
57	102	53	56	23,7	19,2	5 000	KZI-4	1,240	2
	115	53	56	27,6	23,3	4 200	PLC 07-22	1,660	2
62	102	75	102	23,7	19,2	5 000	PLC 07-11	1,730	2
	102	75	102	23,7	19,2	5 000	PLC 07-12	1,730	2
64,6	102	37		23,7	19,2	5 000	PLC 07-17	0,950	3
68	115	55	58	27,6	23,3	4 200	KZI-5	1,420	2
	128	42,5	51	33,5	27,6	4 000	KZI/Z-5/T	1,880	4
	128	43,6	51	33,5	27,6	4 000	KZI/Z-5	1,880	4
	128	42,5	51	33,5	27,6	4 000	KZI/Z-5/D	1,870	4
	128	42,5	70,3	33,5	27,6	4 000	KZI/Z-5/L	2,380	4
70,6	110	37		25,2	21,1	4 400	PLC 07-202	1,150	5
71	110	40		26,6	21,6	4 400	KZI-4,5	1,180	5
80	126	40,8	50,5	33,5	27,6	1 800	PLC 07-28	1,580	6
106	145	18	25	23,8	24,3	2 500	PLC 08-13	0,940	7

Single Direction Thrust Ball Bearings



Dimensions				Basic Load Rating		Limiting Speed for Lubrication with Grease	Oil	Bearing Designation	Weight	Fig.
d	D	H	H ₁	C _r	C _s					
mm				kN		min ⁻¹		kg		
30	49,25	12	11	18,8	31,6	4 200	511Z30	0,086	1	
	49,25	12	11	17,4	28,2	4 200	PLC 23-4	0,083	2	
	49,25	13,55	12,5	17,4	28,2	4 200	PLC 23-5	0,085	3	
35	53,60	12,80	12	20,0	38,3	4 000	511Z35	0,093	1	
	53,60	15,50	14,7	20,0	38,3	3 500	PLC 24-2	0,111	4	

Thrust Ball Bearings for Bumper Units of the Car Axles



Dimensions				Basic Load Rating		Limiting Speed for Lubrication with Grease Oil	Bearing Designation	Weight	
d	D	H	H_1	Dynamic C_r	Static C_o				
mm				kN		min^{-1}		kg	
17	35	12,3	10,5	9,62	15,5		PLC 23-7	0,029	